

Professional Series



Green
Power



Environmental
Friendly



Energy
Saving



PowerBridge Neo³ Series

True Double Conversion Online UPS



- DSP Technology Guarantees High Reliability
- Output Power Factor - 0.9
- Active Power Factor Correction in all Phases
- Optional 10" touch LCD (100K model above)
- ECO Mode Operation for Energy Saving
- Emergency Power Off Function (EPO)
- Optional Parallel Operation
- Smart Battery Charger Design to Optimize Battery Performance
- Maintenance Bypass Available
- Comes with RS232/USB Port, Smart Slot & Power Management Software



• Software •



• 2 Years •
Warranty

Professional Series



True Double Conversion

Double conversion between input/output, battery and bypass are totally isolated power line noise, spike and transients, keeping power failure away from your critical loads

DSP Technology

A Digital Signal Processor (DSP) technology digitizes the data and mathematically manipulates them to provide an improved solution with higher performance

Output Power Factor

For critical applications, this 3-phase online UPS with output power factor 0.9 ensures higher efficiency and advanced performance.

Active Power Factor Correction in all Phases

Power factor correction is active in all phases and it can improve the efficiency of the input.

50Hz/60Hz Frequency Converter Mode

Lock output at 50Hz or 60Hz to suit power sensitive equipment's.

ECO Mode Operation for Energy Saving

ECO mode improves the efficiency up to 98% to cut energy usage & cost. In this mode, loads are supplied by the mains directly. While main failure, the UPS will constantly supply the power to the connected device without any interruption.

Emergency Power Off Function (EPO)

In case of any emergency or fire, the EPO control mechanism can instantly shut down the system.

Optional Parallel Operation

The system can be operated in parallel, increasing the capacity and performance.

Smart Battery Charger Design to Optimize Battery Performance

This UPS is equipped with 3-stage charger to optimize battery performance. This feature extends the useful service life of the battery and optimizes battery recharging time.

Maintenance Bypass Available

Designed for systems which uptime is critical, the maintenance bypass allows seamless transfer of an electrical load from UPS power to mains.

Adjustable Battery Design

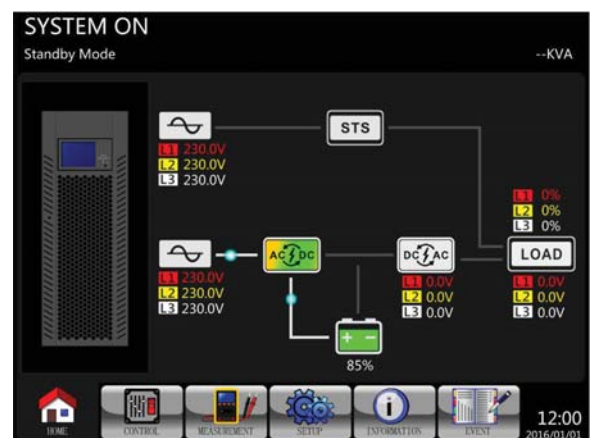
The number of connected batteries can be adjusted flexibly based on different power demands. This feature can allow UPS to keep running when some battery packs are damaged.

Adjustable Charging Current*

Available for 100KVA and above models. Users can adjust charging current via LCD setting based on applications.

Optional 10" Touch Colored LCD*

Available for 100KVA and above models.



*Specification subjects to change without prior notice

Professional Series



Green Power



Environmental Friendly



Energy Saving

RIGHT POWER

The Power Of Continuity

Technical Specification:

MODEL	PowerBridge Neo 3-30K	PowerBridge Neo 3-30KS	PowerBridge Neo 3-40K	PowerBridge Neo 3-40KS	PowerBridge Neo 3-60KS	PowerBridge Neo 3-80KS	PowerBridge Neo 3-100KS	PowerBridge Neo 3-120KS	PowerBridge Neo 3-160KS	PowerBridge Neo 3-200KS
CAPACITY (KVA/KW)	30KVA/27KW		40KVA/36KW		60KVA/54KW	80KVA/72KW	100KVA/90KW	120KVA/108KW	160KVA/144KW	200KVA/180KW
INPUT										
NOMINAL VOLTAGE	3 x 400 vac (3Ph + N)									
PHASE	3-Phase in / 3-phase out									
VOLTAGE RANGE	190 - 520VAC (3-Phase) @ 50% Load ; 305 - 478 VAC (3-Phase) @ 50% Load						208 - 478VAC (3-Phase) @ 50% Load ; 305 - 478VAC (3-Phase) @ 50% Load			
FREQUENCY RANGE	45Hz - 54Hz or 56 - 64Hz						40Hz - 70Hz			
INPUT POWER FACTOR	≥ 0.99 @ 100% load									
OUTPUT										
OUTPUT VOLTAGE	3 x 360* / 380 / 400/415 VAC (3Ph+N)									
AC VOLTAGE REGULATION (Batt. Mode)	± 1%									
FREQUENCY RANGE (Synchronized Range)	46 ~ 54 Hz or 56 ~ 64 Hz									
FREQUENCY RANGE (Batt. Mode)	50Hz ± 0.1Hz or 60Hz ± 0.1Hz									
CURRENT CREST RATIO	3:1 (max)									
TOTAL HARMONIC DISTORTION (THDv)	≤ 2% @ Linear Load ; ≤ 4% @ Non-Linear Load						≤ 2% @ Linear Load ; ≤ 4% @ Non-Linear Load			
WAVEFORM	Pure Sinewave									
TRANSFER TIME (TYPICAL)	Zero									
OUTPUT SOCKET	Hard-Wiring (Terminal Block)									
OVERLOAD (AC Mode)	100 - 110% for 10min, 110-130% for 1min, >130% for 1 second						105 - 110% for 1hr, 111-125% for 10min, 126-150% for 1min, >150% for 200ms			
OVERLOAD (Battery Mode)	100 - 110% for 30seconds, 110-130% for 10 seconds, >130% for 1 second						105-110% for 1hr, 111-125% for 10min, 126-150% for 1min, >150% for 200ms			
PARALLEL CAPACITY	up to 3 units in parallel						up to 2 units in parallel			
EFFICIENCY										
AC MODE	94.5%						94.5%			
ECO MODE	98.0%						98.0%			
BATTERY MODE	94.5%									
BATTERY										
SEALED LEAD ACID MAINTENANCE FREE BATTERY - CSB/YUASA/PANASONIC Japan Battery	12V 7AH x (16+16)pcs x 2 string	Depending on the capacity of External Batteries	12V 9AH x (16+16)pcs x 2 string	Depending on the capacity of External Batteries	Depending on the capacity of External Batteries					
BACKUP TIME (Depending on Load)	15 to 20 minutes		15 to 20 minutes							
RECHARGE TIME	9 hours to 90%		9 hours to 90%							
CHARGING CURRENT (MAX)	2A	4A	2A	4A						
CHARGING VOLTAGE	± 218VDC									
STATUS INDICATION										
LCD DISPLAY	UPS Status, Load Level, Battery Level, Input/Output Voltage, Discharge Timer, UPS Fault LCD Display									
AUDIBLE ALARM	Battery Mode, Low Battery, UPS Fault, Overload 5.7" Monochrome LCD or 10" Touch Type Colour LCD									
COMMUNICATION										
POWER MANAGEMENT SOFTWARE	Support Window Family, Linux & MAC - Automatically Shut-down, Saves Application Data Before Exit - Power Flow Display for Monitoring UPS Status - Schedules System Shutdown/Restart - Warning Notification Via E-Mail/Pager/Broadcast* - Remote Monitor/Control via LAN - Safety Shutdown Multi System - Records Logs for Analysis									
INTERFACE	USB Port / RS 232 Port									
SNMP Slot	Yes									
EMERGENCY POWER OFF	Yes									
PHYSICAL										
OPERATING ENVIRONMENT	0-40°C, 0 - 95% Relative Humidity (Non-Condensing)									
NOISE LEVEL	< 70dB @ 1 Meter						< 70dB @ 1 Meter		< 73dB @ 1 Meter	
DIMENSION (DxWxH)mm	815 x 300 x 1000		815 x 300 x 1000		790 x 360 x 1010		940 x 567 x 1000		1040 x 567 x 1442	
WEIGHT (KG)	205	60	230	61	108	113	194	229	301	335

*Specification subjects to change without prior notice

